



Shirane-aoi (Japanese wood poppy) planting activities

Responsibility to Communities

As a comprehensive biomass company creating new products and growing its businesses, the Nippon Paper Group manages broad expanses of forests and owns large-scale production sites, so it has significant impacts on local communities and the people who live and work in them.

Coexistence with these communities is critical to our own continued existence.

* Please refer to page 76 of the Nippon Paper Intergrated Report 2020.

Materiality	Related Indicators	State of Efforts (fiscal 2019)
Coexistence with Local Communities and Society	Communication to gain the trust of local communities and society	Welcomed local schools, neighborhood associations and other groups for mill tours, and interacted with members of local communities by engaging in other activities, such as joint sponsorship of events
	Gaining understanding from the stakeholder	Gathered opinions and evaluations from stakeholders connected with our activities (by conducting questionnaires and other surveys)

Policy and Management

The Nippon Paper Group engages in a variety of social contribution activities to garner the trust of and remain close to local residents

Basic Stance

As one of its members, the Nippon Paper Group aims to contribute to society as a whole. While continuing to provide needed products, we would like to play a useful role in protecting the global environment, and in the advancement of culture and local communities. We are confident that building a consistent track record along these lines will earn the trust of society and allow us to continue our business activities in coexistence with local communities. The initiatives we engage in, both inside and outside Japan, include cleanups of the areas around our mills and plants, support for employment in afforestation areas, and other locally focused activities; and hosting of the School of Friendship for Forests and Paper, mill tours, and other activities making use of Group-owned forests and other Group resources.

Philosophy and Principles for Social Contribution Activities
(established on April 1, 2004)

Philosophy
As a member of society, we shall proudly promote activities that contribute to social development.

Principles

1. We shall pursue activities that contribute to cultural heritage and development.
2. We shall pursue activities that contribute to conservation and improvement of the environment.
3. We shall pursue activities that contribute to the development of communities.

Specific activity themes

- Increase the community involvement of Group company mills and overseas affiliates
- Promote activities that effectively utilize the resources and expertise of each Group company
- Promote corporate citizenship activities in which our employees play an active role
- Effectively use the company-owned forests in Japan (about 90,000 hectares)
- Employ effective PR inside and outside the Group

Structure for promoting social contribution activities

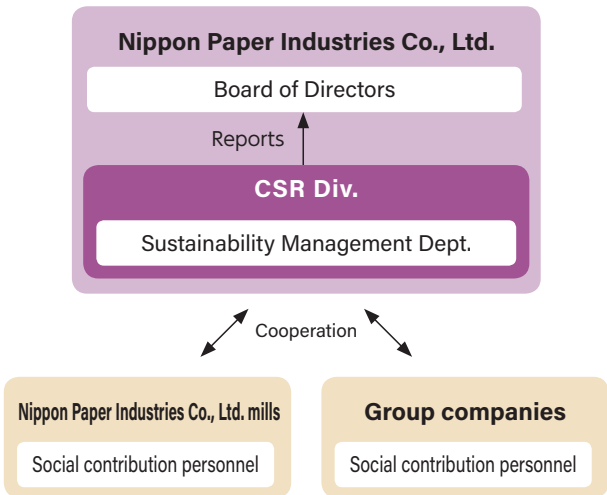
Nippon Paper Industries Co., Ltd.'s CSR Div. acts as the administrative office in driving the Nippon Paper Group's social contribution activities.

The central focus of these activities is on those relating to the Group's forests in Japan. For example, annual activity plans including volunteer participation in the School of Friendship for Forests and Paper and the Shiraneaoi Preservation Group, joint surveys in cooperation with the Wild Bird Society of Japan, and activities to eradicate alien species from Iriomote-jima Island are all administrated by the CSR Div.

The Division is also responsible for considering and executing new activities, such as the collection of used paper cups at Nippon Paper Industries Co., Ltd.'s head office, which began in fall 2019.

Personnel responsible for social contribution activities at each of Nippon Paper Industries Co., Ltd.'s mills and other Group companies engage continuously in locally focused activities in their local communities.

The CSR Div. collaborates with mills and group companies to ascertain the state of these social contribution activities, and reports the state of their execution to the Board of Directors of Nippon Paper Industries Co., Ltd.



The Nippon Paper Group's principal social contribution activities

Principal activities	Specific examples	Page
Local community activities		
Cleaning activities	Appreciation event at Asahiyama Zoo	—
Local community safety and disaster prevention	Children's "emergency 110" patrol project (110 is the number to dial for emergency assistance in Japan)	—
	Traffic safety initiatives	70
	Participation in fire brigades	—
Preserving local community cultures	Supporting Asukayama Takigi Noh plays	—
Respect for indigenous peoples	Making wild herb habitats available to indigenous peoples	—
	Protecting indigenous heritage sites	84
	Designating indigenous heritage sites as permanent protected zones	84
	Donating materials to district inhabited by indigenous peoples	84
Holding and participating in local events	Participating in and sponsoring local events	—
	Opening of recreational facilities to the public	—
	Holding summer festivals and other events	—
Social welfare activities	Copier-paper sale in support of the Pink Ribbon Campaign	—
	Participating in and cosponsoring social welfare events	—
	Purchasing products made by social welfare groups	—
Providing awareness-raising opportunities	Holding of CSR lectures (public seminars)	24
Advancing science and technology	Supporting the Fujihara Foundation of Science	85
Disaster relief activities	Donations of money and emergency supplies	11-12
Environmental activities		
Utilizing company- owned forests	Marunuma Highland Tree-Planting	83
Preserving biodiversity	Conducting business activities while protecting Blakiston's fish owl habitat	54
	Improving breeding conditions for the Blackiston's fish owl by installing artificial nesting boxes	85
	Supporting the activities of the Shiraneaol Preservation Group	55
	Eradicating invasive plant species from Iriomote Island	55
Promoting recycling activities	Operating the Recycle Plaza Shiyukan	—
	Recycling Paper-Pak containers	52
Accountability to local communities	Environmental risk communication	42
Educational activities		
Providing opportunities o tour group companies and their mills	Programs that welcome junior high school students for opportunities to experience a workplace	—
Utilizing company-owned forests	Holding the School of Friendship for Forests and Paper	83
Employment support	Internships, and programs that welcome students for opportunities to experience a workplace	—
	Holding seminars to meet the requests of local people	85
Classes taught by employees	Cooperation in teaching school classes	—
Music appreciation	Inviting students to concerts	86
Providing educational opportunities through sports	Cosponsoring the Fukuchiyama Marathon	—
	Supporting sports classes for children from low-income families	86
Providing products to classrooms	Provision of paper products, printed materials and publications	—

*Overseas activities

→ The Nippon Paper Group's principal social contribution activities

<https://www.nipponpapergroup.com/csr/society/activity/>

Utilizing Company-Owned Forests

CASE Conducting the annual School of Friendship for Forests and Paper*1
(Nippon Paper Industries Co. Ltd., Nippon Paper Development Co., Ltd.)



Children listening to explanations by a member of staff

The School of Friendship for Forests and Paper is a hands-on course on the natural environment utilizing forests (approximately 90,000 hectares) owned by Nippon Paper Industries in Japan. With the aim of introducing participants to the beauty and abundance of forests owned by the company, the school is also an opportunity to experience the connection between forests and paper, an essential item for everyday life. This initiative was first launched in the Sugenuma forest of Gunma Prefecture in October 2006.

The common programs that make up the school draw heavily on the knowledge and experience of employees. With Group employees serving as

guides, Comments from parents and guardians included, "It was a great opportunity to get to know the forest."

Since its inception at the Sugenuma company-owned forest, through fiscal 2019, the school has been conducted 24 times, for a total of 800 participants, including parents and children, and students from local schools.

the school has been conducted 24 times, for a total of 800 participants, including parents and children, and students from local schools.

In fiscal 2018 and 2019, we also co-sponsored and participated in an FSC® Forest Week*2 event, providing opportunities to learn about forest certification and other aspects of forest management.

*2 FSC license number: FSC®-C001751



Children's picture diaries of the event



A ceremonial photograph of all involved parties

→ School of Friendship for Forests and Paper

<https://www.nipponpapergroup.com/morikami/>

CASE Marunuma Highland Tree-Planting 2019 held (Nippon Paper Industries Co., Ltd.)

Nippon Paper Industries Co., Ltd. is engaged in initiatives aimed at preserving thriving forests for future generations.

As part of that effort, tree-planting activities were begun in the company's Sugenuma Forest in Gunma Prefecture in May 2010. The eighth iteration of this activity—the Marunuma Highland Tree Planting 2019—took place in fiscal 2019. Around 90 people, both from the Nippon Paper Group and otherwise, participated in the event.



Participants planting trees

*1 Although the event was cancelled in fiscal 2020 due to the impact of the COVID-19 pandemic, we will continue to engage in social contribution activities utilizing company forests in the future.

Respect for indigenous peoples

CASE Protecting indigenous heritage sites (Australia, Nippon Paper Resources Australia Pty. Ltd.)

In 2016, ancient aboriginal stone tools were discovered on the PTP plantation, one of the Australian plantation projects managed by Nippon Paper Resources Australia Pty. Ltd. (NPR). Experts performed an on-site survey, and in 2017 the area was registered as an aboriginal heritage site. In 2018, a sign forbidding unauthorized access was erected to help preserve the site. Moving forward, the company will formulate a cultural heritage site management plan for future harvesting at the plantation.

Dialogue with local aboriginal organizations will be continued, and the company will cooperate in preserving the site in its current condition.



Stone tool discovered on the PTP plantation



Sign to help preserve the site

CASE Designating indigenous heritage sites as permanent protected zones (Brazil, AMCEL S.A.)

Heritage site excavation surveys carried out on a 16,000 hectare piece of land owned by AMCEL S.A. between August 2013 and January 2014 resulted in the discovery and retrieval of 21 archaeological artifacts. AMCEL has designated the entire area as a permanent protected zone, and is working to ensure the preservation of the site in collaboration with local government and research institutions. The company is also conducting educational activities, such as by holding educational lectures on cultural heritage at schools in the city of Tartarugalzinho.



Signboard installed at the site



Educational lecture on cultural heritage

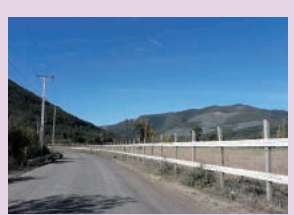
CASE Donating materials to district inhabited by indigenous peoples (Chile, Volterra S.A.)

Volterra S.A. participated in a local indigenous society project, donating funds to replace a deteriorated sewage tank and piping in a district populated by indigenous people next to one of its company forests. The company also participated in a road repaving and expansion project in the district and provided and installed fencing materials. These activities lead directly to improvements in the living environment for people in the district. Through activities and dialogues such as these,

Volterra will continue to deepen the level of relationships and mutual understanding with people living in these indigenous districts.



Tank and piping donated by Volterra



Fence installed by Volterra

Advancing science and technology

CASE Supporting the Fujihara Foundation of Science (Nippon Paper Industries Co., Ltd.)

Considered the "Nobel Prize of Japan," the Fujihara Award, presented by the Fujihara Foundation of Science, a public interest incorporated association, recognizes outstanding contributions to science and technology by Japanese scientists.

Inheriting the spirit of Ginjiro Fujihara, the founder of Nippon Paper, for contributing to the science and technology promotion in Japan, Nippon Paper Industries lends financial support to the Foundation

to promote science and technology.

At the 61st Fujihara Awards Ceremony, held in August 2020, Keisuke Suzuki, Honorary Professor at the Tokyo Institute of Technology and Institute Professor of its Organization for Fundamental Research, and Noboru Mizushima, Professor at the Graduate School of Medicine, The University of Tokyo, were presented with award certificates, medals, and prize money of 10 million yen each.

Preserving biodiversity

CASE Improving breeding conditions for the Blackiston's fish owl by installing artificial nesting boxes in cooperation with the Wild Bird Society of Japan (Nippon Paper Industries Co., Ltd.)

Since 2010, Nippon Paper Industries Co., Ltd. has been working to ensure a balance between its business activities and the preservation of the habit for Blackiston's fish owls in its company forest in Hokkaido. In 2020, the company will engage in activities to assist the breeding activities of these owls by installing several artificial nesting boxes in its company forest in cooperation with the Wild Bird Society of Japan (see P.54).

Blackiston's fish owl is one of the world's largest species of owl. In Japan, its habitats range from Hokkaido to the Northern Territories (the Kuril Islands). Until the beginning of the 20th century, the owls were distributed across the entire area of Hokkaido. With the decrease in the number of trees to

build nests due to deforestation, and the decline in numbers of fish to feed on as a result of river improvement and the construction of erosion control dams, the owls are currently classified as a Critically Endangered IA species; at the highest risk of becoming extinct.

To continue living, Blackiston's fish owls require abundant natural habitats with plentiful supplies of food and large trees suitable for nesting.

Moving forward, Nippon Paper Industries Co., Ltd. will continue to engage in activities to preserve abundant forests that suitable habitats for Blackiston's fish owls, which can also be regarded as a symbol of biodiversity.

Employment support

CASE Holding lectures in line with the requests of people in the local community (Brazil, AMCEL S.A.)

AMCEL owns vast areas of land, including afforestation areas, and is working to deepen its level of cooperation and dialogues with residents of local communities.

As one aspect of these efforts, the company asks local people what they would like to learn for vocational and lifestyle purposes, and continuously holds lectures on these themes.

In fiscal 2019, experts invited by AMCEL gave lectures on the themes of information processing and sewing, in the four districts of Santana, Ferreira Gomes, Tartarugalzinho and Itauba.

The lecture courses ran for between four and 15 days and were attended by over 360 people, and were well received.



Scenes from some of the lectures

Music appreciation

CASE Inviting pupils and students to Sakkyo Pops Concert (Nippon Paper Industries Co., Ltd., Nippon Paper Crecia Co., Ltd.)

Nippon Paper Industries Co., Ltd. specially invited around 450 local elementary school pupils, junior high school and high school students and music teaching staff, and people affected by the Hokkaido Eastern Iburi Earthquake to its "Nippon Paper Kleenex® presents Sakkyo Pops Concert Vol. 17" event at the Sapporo Concert Hall 'Kitara.'

The concert is held in a joint effort between Hokkaido's only professional orchestra, the Sapporo Symphony Orchestra and the Hokkaido Shimbun Press. Nippon Paper provides a special sponsorship for the purpose

of supporting the cultural arts in Hokkaido, while Nippon Paper Crecia contributes as a product sponsor. The first part of this 17th edition of the event commemorated the 50th anniversary of the Apollo moon landings, with performances of numerous pieces of music dedicated to the moon and stars.

In the second part, Japanese singer and composer Hiroshi Itsuki—who was also celebrating 55 years of his career in entertainment—captivated the audience with both new and old songs written by himself.

Providing educational opportunities through sports

CASE Supporting sports classes for children from low-income families (Brazil, AMCEL S.A.)

AMCEL supports sports classes for children in local communities.

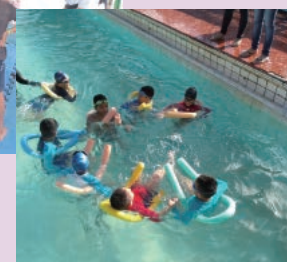
In fiscal 2019, the "Judô" (judo class) and "Peixinhos Voadores" (swimming class) programs were held, with around 100 children participating.

The activities are conducted by the environmental patrol of the Amapá state police, with the objective of encouraging the healthy development of children in low-income families through sports classes and preventing them from becoming involved in crime or drug abuse.

AMCEL supports these initiatives every year by providing equipment such as judo uniforms mats and inflatable swim rings.



Judo class



Swimming class