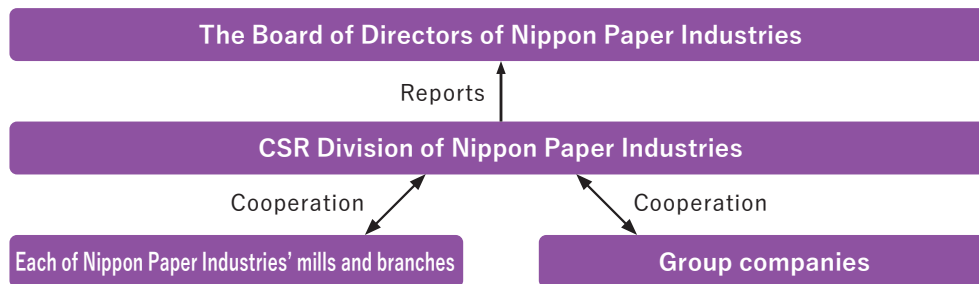


# Co-existence with Communities

» Philosophy and Principles of Social Contribution Activities (see p.91)

## Structure for Promoting Social Contribution Activities



## Social Contribution Activities

Personnel responsible for social contribution activities at each of the Company's mills and other Group companies constantly engage in the following locally focused activities in their communities.

- ▶ Increase the community involvement of Group company's mills and overseas affiliates
- ▶ Promote activities that effectively utilize the resources and expertise of each Group company
- ▶ Promote corporate citizenship activities in which employees play an active role
- ▶ Effectively use the company-owned forests in Japan (about 90,000 hectares)
- ▶ Employ effective PR inside and outside the Group

### Social Contribution Activity Expenses (Nippon Paper Industries)

	FY2019	FY2020	FY2021
Social Contribution Activity Expenses (Donation Amount) (Million Yen)	87	75	58

### — Support for Employees' Social Contribution Activities

The Company systematically supports employees' participation in volunteer activities.

- ▶ A system to allow employees to take leave for volunteering (Japan Overseas Cooperation Volunteers, etc.)
- ▶ Acquisition of expired annual leave for volunteer activities

## The Nippon Paper Group's principal social contribution activities

Principal activities	Specific examples	
<b>Local community activities</b>		
Cleaning activities	<a href="#">Cleaning activities around business sites, etc</a> Donation of flower seedlings to elementary schools, etc	
Local community safety and disaster prevention	Children's "emergency 110" patrol project(110 is the number to dial for emergency assistance in Japan)	
	<a href="#">Traffic safety initiatives</a>	
	Cooperation in preventing bank transfer fraud Participation in fire brigades in afforestation areas*	
Preserving local community cultures	Donation of stand-type paper bags (to put used disposable chopsticks and towels after meals), etc. to elementary and junior high schools to coincide with hometown lunch days	
Respect for indigenous peoples	<a href="#">Protecting indigenous heritage sites*</a>	
	<a href="#">Designating indigenous heritage sites as permanent protected zones*</a>	
Holding and participating in local events	Participating in and sponsoring local events Opening of recreational facilities to the public	
	Copier-paper sale in support of the Pink Ribbon Campaign <a href="#">Distributing food baskets to low-income families*</a> <a href="#">Participating in and cosponsoring social welfare events</a>	
Providing awareness-raising opportunities	Sustainability Lecture (on-demand distribution)	
Advancing science and technology	<a href="#">Supporting the Fujihara Foundation of Science</a>	
Disaster relief activities	Donations in the event of a natural disaster Loan of temporary housing land for victims of heavy rain disasters	
	<b>Environmental activities</b>	
Utilizing company- owned forests	Supporting the activities of the Shiraneaoi Preservation Group	
Preserving biodiversity	Conducting business activities while protecting Blakiston's fish owl habitat Improving breeding conditions for the Blackiston's fish owl by installing artificial nesting boxes Eradicating invasive plant species from Iriomote Island	
	Promoting recycling activities	Collection and recycling of used paper cups in-house Recycling Paper-Pak containers
	Accountability to local communities	Environmental risk communication
<b>Educational activities</b>		
Utilizing company-owned forests	<a href="#">Conducting the annual School of Friendship for Forests and Paper</a>	
<small>Providing opportunities to tour group companies and their mills</small>	Acceptance of factory tours	
Employment support	Internships that welcome students for opportunities to experience a workplace <a href="#">Implementation of vocational training for community residents around plantations*</a>	
	Classes taught by employees	<a href="#">Cooperation in teaching school classes</a>
Music appreciation	<a href="#">Sponsoring music competitions</a>	
<small>Providing educational opportunities through sports</small>	<a href="#">Supporting sports classes for children from low-income families*</a>	
Providing products to classrooms	Providing in-house products to educational institutions	

\*Overseas activities