

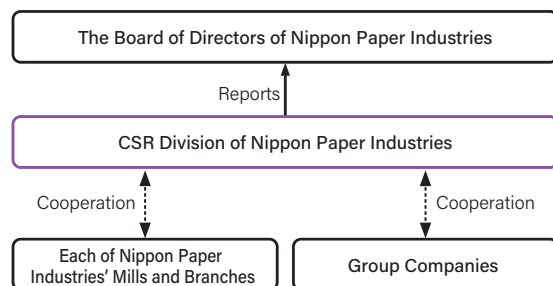
Coexistence with Local Communities and Society

1 Basic Policy

As a member of society, the Nippon Paper Group wants to contribute to the development of society as a whole. While continuing to supply products that society needs, the Group wants to contribute to protecting the global environment and developing culture and local communities. Accumulating activities for that purpose will lead to gaining society's trust and continuing our business activities while coexisting with the local community.

 [→P86](#) **Philosophy and Principles of Social Contribution Activities**

2 Promotion Structure



- The Group continues to carry out activities to deepen coexistence with each community while utilizing the Group's expertise and resources.
- In FY2022, reports on Nippon Paper Industries' biodiversity conservation activities were submitted to the Management Executive Committee. [→P03](#)

3 Main Activities for Coexistence with Communities and Society, and Social Contribution Activities

List of Main Activities for Coexistence with Communities and Society and Social Contribution Activities

Activity classification	Activity description
Local community activities	
Activities for regional cleaning, safety, disaster prevention and disaster support activities	<ul style="list-style-type: none"> ● Cleaning activities around business sites, etc. ● Donation of flower seedlings to elementary schools, etc. ● Children's "emergency 110" patrol project (110 is the number to dial for emergency assistance in Japan) ● Traffic safety initiatives ● Cooperation in preventing bank transfer fraud ● Participation in fire brigades in plantation areas* ● Contribution of relief funds in the event of natural disasters, lending of temporary housing sites to disaster victims, and provision of relief supplies
Preserving local culture and respect for indigenous peoples	<ul style="list-style-type: none"> ● Protecting indigenous heritage sites* ● Designating indigenous heritage sites as permanent protected zones* ● Participating in and sponsoring local events
Social welfare activities	<ul style="list-style-type: none"> ● Copier-paper sale in support of the Pink Ribbon Campaign ● Distribution of compost using bark and biomass residuals to farmers around plantations* ● Financial support for elderly care facilities ● Participating in and cosponsoring social welfare events ● Support for breast cancer network* ● Opening company-owned welfare facilities such as gymnasia to the local residents, various organizations, individuals, and other general public
Providing awareness-raising opportunities	<ul style="list-style-type: none"> ● Sustainability lectures →P02
Advancing science and technology	<ul style="list-style-type: none"> ● Supporting the Fujihara Foundation of Science
Environmental activities	
Utilization of company-owned forests and preservation of biodiversity	<ul style="list-style-type: none"> ● Supporting the activities of the Association for the Protection of Shirane-aoi →P45 ● Preserving blackiston's fish owl habitat while pursuing business activities →P45 ● Improving breeding conditions for the Blackiston's fish owl by installing artificial nesting boxes ● Eradicating invasive plant species from Iriomote Island →P45
Promoting recycling activities	<ul style="list-style-type: none"> ● Collection and recycling of paper cups →P39 ● Paper Carton Recycling →P39 ● Effective use of local waste →P41
Responsibility to local communities	<ul style="list-style-type: none"> ● Environmental communication →P25 ● Participation in programs aimed at protecting and improving local water resources* →P41
Educational activities	
Workshops and visiting classes	<ul style="list-style-type: none"> ● Conducting the School of Friendship for Forests and Paper ● Cooperation in teaching school classes
Providing opportunities to tour group companies and their mills	<ul style="list-style-type: none"> ● Acceptance of factory tours
Employment support, provision of products to educational sites	<ul style="list-style-type: none"> ● Internships that welcome students for opportunities to experience a workplace ● Implementation of vocational training for community residents around plantations* ● Providing in-house products to educational institutions
Providing educational opportunities through music and sports	<ul style="list-style-type: none"> ● Sponsorship of music competitions and sports events ● Supporting sports classes for children from low-income families*

* Overseas activities

Coexistence with Local Communities and Society

CASE STUDY

1. Local Community Activities

Designating Indigenous Heritage Sites as Permanent Protected Zones (AMCEL Brazil)

Heritage site excavation surveys carried out on approximately 16,000 hectares of land owned by AMCEL between August 2013 and January 2014 resulted in the discovery and retrieval of 21 archaeological artifacts. AMCEL has designated the entire area as a permanent protected zone, and is working to ensure the preservation of the site in collaboration with local government and research institutions. The company is also conducting educational activities, such as by holding educational lectures on cultural heritage at schools in the city of Tartarugalzinho.

Distribution of Compost Using Bark and Biomass Residuals to Farmers around AMCEL's Plantations (AMCEL Brazil)

AMCEL distributes free compost made from biomass residues such as bark generated during tree planting and forestry activities to local farmers around its plantations. This activity promotes agriculture in the local community and has been praised by the farmers as leading to the organic cultivation of crops. It also leads to the effective utilization of unused biomass residue.

Participating in and Cosponsoring Social Welfare Events

The Company and Nippon Paper Trading etc. gather pet bottled beverage caps collected in-house and donate them to NPOs. After the donated caps are sold, the proceeds are replaced with vaccines and provided to children worldwide. In addition, many of the Group companies in Japan cooperate with the Japanese Red Cross Society in blood donation. The Company's Higashimatsuyama Plant received a letter of appreciation for its cooperation over the years.

2. Educational Activities

Conducting the School of Friendship for Forests and Paper (Nippon Paper Industries)

The "School of Friendship for Forests and Paper" is a unique natural environment classroom that utilizes Nippon Paper Industries' owned forests. In October 2006, the Company held an event in the Suganuma company-owned forest in Gunma Prefecture (Marunuma Kogen) for the purpose of providing opportunities for ordinary parents and children to come in contact with the rich nature and experience the connection between forests and paper, which is indispensable in life. The event is planned and operated by using its employees' knowledge and experience. In FY2022, the Company held the "Online School of Friendship for Forests and Paper", where participants can choose their preferred location. For the 35 elementary school students and their guardians who participated, the Company held classes on the role of forests and the environmental characteristics of paper, as well as workshops using leaves from company-owned forests. Participants made comments such as "I want to live an eco-friendly life," and "I want to learn more about forests and paper."

Implementation of Vocational Training for Community Residents Around Plantations (AMCEL Brazil)

AMCEL owns vast land, including plantation land, and strives to deepen its cooperation and dialogue with local residents. As part of this, it asks what the community wants to learn for employment, and continuously holds seminars on themes that match those questions. In recent years, it has invited apiculture technicians to provide technical guidance and materials for apiculture, thereby supporting the economic independence of the local people.

Supporting Sports Classes for Children from Low-income Families (AMCEL Brazil)

AMCEL supports sports classes for children in local communities. The activities are conducted by the environmental patrol of the Amapá state police, with the objective of encouraging the healthy development of children in low-income families through sports classes and preventing them from becoming involved in crime or drug abuse. AMCEL continues to support this initiative by providing uniforms worn by participants.

Social Contribution Activity Expenses (Nippon Paper Industries)

	FY2020	FY2021	FY2022
Social contribution activity expenses (Donation amount) (Million Yen)	75	58	49

4 Support for Employees' Social Contribution Activities

The Company systematically supports employees' participation in volunteer activities.

- A system to allow employees to take leave for volunteering (Japan Overseas Cooperation Volunteers, etc.)
- System for taking leave for volunteer activities (use of expired annual paid leave [held over leave])