

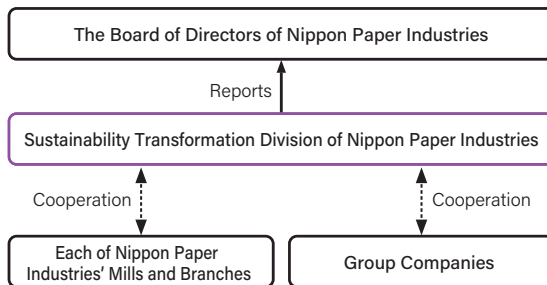
# Coexistence with Local Communities and Society

## 1 Basic Policy

As a member of society, NIPPON PAPER GROUP wants to contribute to the development of society as a whole. While continuing to supply products that society needs, the Group wants to contribute to protecting the global environment, developing culture and local communities. Accumulating activities for that purpose will lead to gaining society's trust and continuing our business activities while coexisting with the local community.

 [→P90](#) **Philosophy and Principles for Social Contribution Activities**

## 2 Promotion Structure



- The Group continues to carry out activities to deepen coexistence with each community while utilizing the Group's expertise and resources.
- The Group accepts opinions from local residents through its website and other channels.
- In FY2023, the Company's biodiversity conservation activities were reported to the Board of Directors. [→P03](#)

## 3 Main Activities for Coexistence with Communities and Society, and Social Contribution Activities

### List of Main Activities for Coexistence with Communities and Society and Social Contribution Activities

| Activity classification   | Activity description   |
|---|--|
| <b>Local community activities</b>   |  |
| Activities for regional cleaning, safety, disaster prevention and disaster support activities | <ul style="list-style-type: none"> <li>● Cleaning activities around business sites, etc.</li> <li>● Donation of flower seedlings to elementary schools, etc.</li> <li>● Children's "emergency 110" patrol project (110 is the number to dial for emergency assistance in Japan)</li> <li>● Traffic safety initiatives</li> <li>● Cooperation in preventing bank transfer fraud</li> <li>● Participation in fire brigades in plantation areas*</li> <li>● Contribution of relief funds in the event of natural disasters, lending of temporary housing sites to disaster victims, and provision of relief supplies</li> </ul> |
| Preserving local culture and respect for indigenous peoples                                   | <ul style="list-style-type: none"> <li>● Protecting indigenous heritage sites*</li> <li>● Designating indigenous heritage sites as permanent protected zones*</li> <li>● Participation, sponsorship, and cooperation in local events</li> </ul>  |
| Social welfare activities   | <ul style="list-style-type: none"> <li>● Copier-paper sale in support of the Pink Ribbon Campaign</li> <li>● Distribution of compost using bark and biomass residuals to farmers around plantations*</li> <li>● Participating in and cosponsoring social welfare events</li> <li>● Support for breast cancer network*</li> <li>● Opening company-owned welfare facilities such as gymnasia to the local residents, various organizations, individuals, and other general public</li> </ul>   |
| Providing awareness-raising opportunities   | <ul style="list-style-type: none"> <li>● <a href="#">Sustainability lectures</a> <a href="#">→P02</a></li> </ul>   |
| Advancing science and technology  | <ul style="list-style-type: none"> <li>● Supporting the Fujihara Foundation of Science</li> </ul>  |
| <b>Environmental activities</b>   |  |
| Utilization of company-owned forests and preservation of biodiversity                         | <ul style="list-style-type: none"> <li>● <a href="#">Supporting the activities of the Association for the Protection of Shirane-aoi</a> <a href="#">→P46</a></li> <li>● <a href="#">Preserving blackiston's fish owl habitat while pursuing business activities</a> <a href="#">→P46</a></li> <li>● <a href="#">Improving breeding conditions for the Blackiston's fish owl by installing artificial nesting boxes</a></li> <li>● <a href="#">Eradicating invasive plant species from Iriomote Island</a> <a href="#">→P46</a></li> </ul>  |
| Promoting recycling activities  | <ul style="list-style-type: none"> <li>● <a href="#">Collection and recycling of paper cups</a> <a href="#">→P40</a></li> <li>● <a href="#">Paper Carton Recycling</a> <a href="#">→P40</a></li> <li>● <a href="#">Effective use of local waste</a> <a href="#">→P42</a></li> </ul>  |
| Responsibility to local communities   | <ul style="list-style-type: none"> <li>● <a href="#">Environmental communication</a> <a href="#">→P25</a></li> <li>● <a href="#">Participation in programs aimed at protecting and improving local water resources*</a> <a href="#">→P42</a></li> </ul>  |
| <b>Educational activities</b>   |  |
| Workshops and visiting classes  | <ul style="list-style-type: none"> <li>● Conducting the "School of Friendship for Forests and Paper"</li> <li>● Cooperation in teaching school classes</li> </ul>  |
| Providing opportunities to tour group companies and their mills                               | <ul style="list-style-type: none"> <li>● Acceptance of factory tours</li> </ul>  |
| Employment support, provision of products to educational sites                                | <ul style="list-style-type: none"> <li>● Internships that welcome students for opportunities to experience a workplace</li> <li>● Implementation of vocational training for community residents around plantations*</li> <li>● Providing in-house products to educational institutions</li> </ul>  |
| Providing educational opportunities through music and sports                                  | <ul style="list-style-type: none"> <li>● Sponsorship of music competitions and sports events</li> <li>● Supporting educational projects for children from low-income families*</li> <li>● Baseball classes held by the corporate baseball team</li> <li>● Tennis classes held by the corporate tennis club</li> </ul>  |

\* Overseas activities

## Coexistence with Local Communities and Society

### CASE STUDY

#### Participating in and Cosponsoring Social Welfare Events

The Company and Nippon Paper Trading etc. gather pet bottled beverage caps collected in-house and donate them to NPOs. After the donated caps are sold, the proceeds are replaced with vaccines and provided to children worldwide. In addition, many of the Group companies in Japan cooperate with the Japanese Red Cross Society in blood donation. The Company's Higashimatsuyama Mill received a letter of appreciation for its cooperation over the years.

#### Provision of Company Products for Temporary Toilets and Other Facilities around the Fukuchiyama Marathon Course (Nippon Paper Crecia)

Nippon Paper Crecia has cooperated with the Fukuchiyama Marathon, which is held on November 23rd every year, since its 9th event in 1999. It supplies toilet rolls and tissues to over 100 temporary toilets and other facilities around the marathon course.

At its booth(tent) in the event, there are product displays, quizzes, and prizes available.

#### Community Contributions by NIPPON PAPER GROUP BASEBALL TEAM (Nippon Paper Industries)

NIPPON PAPER GROUP BASEBALL TEAM is a corporate baseball team based at the Company's Ishinomaki Mill. While participating in games, the team holds baseball clinics for local youth and joint training sessions with local high school students to continuously engage with the community through sports.

To ensure community safety and support the emotional well-being of children, the team members also volunteer to stand outside local elementary schools to greet students while ensuring their safety.

#### Conducting the "School of Friendship for Forests and Paper" (Nippon Paper Industries)

The "School of Friendship for Forests and Paper" is a natural environment classroom that utilizes Nippon Paper Industries' company-owned forests. The school provides opportunities for guardians and children to experience the connection between nature and paper, which is essential to our daily lives. The Company has hosted the school in its company-owned forests in Gunma and Kumamoto Prefectures for over ten years, where the Company and Group employees serve as instructors and staff. In FY2022, the web-based "Online School of Friendship for Forests and Paper" was held in consideration of preventing the spread of COVID-19.

In FY2023, the school was hosted in a company-owned forest in Kumamoto Prefecture for the first time in four years. Additionally, based on the experience of holding the school online, which highlighted the importance of providing self-learning programs that connect with local communities, the Company organized the "School of Friendship for Forests and Paper in Shiraoi" at the Shiraoi Mill as its new initiative, with the support of the non-profit organization Tarumae arty+ and Tomakomai City Museum.

## Coexistence with Local Communities and Society

### CASE STUDY

#### Contributing to Local Communities by Utilizing the Company's Packaging and Design Technologies (Opal)

Opal (Australia) has been working with Breast Cancer Network Australia (BCNA), an Australian breast cancer patient support group, for many years to raise support for the patient, their families and families of the deceased by providing cardboard dolls and tribute boxes at events where the organization participates.

In New Zealand, Opal has been engaging in an initiative to deliver kiwifruit to local primary schools and other facilities in cooperation with its customers. Opal also designs and supplies delivery boxes, contributing to both reducing food waste and maintaining the well-being of primary school children through the initiative.

#### Supporting Women's Empowerment Through Sports (Opal)

As part of its support for women in sports, Opal (Australia) has been a founding sponsor of an Australian Football League Women's team of St Kilda Football Club. Together with the club, Opal is working on various initiatives to empower women, such as improving sports performance, enhancing diversity, and supporting women's leadership.

In 2023, Opal organized the Opal Little Saints Cup, a football event for primary school girls, welcoming over 100 participants.

#### Amcel (Brazil) has been engaging in various initiatives to enhance its coexistence with local communities utilizing its expertise.

##### Designating Indigenous Heritage Sites as Permanent Protected Zones (AMCEL)

AMCEL currently has a Petroglyph (geometric rock engravings) archaeological site, discovered by the survey carried out between August 2013 and January 2014, located in the municipality of Tartarugalzinho. The Company has designated the entire area as a permanent protected zone and carries out constant monitoring to ensure the preservation of the site, in collaboration with local government institutions.

##### Distribution of Compost Using Bark and Biomass Residuals to Farmers around AMCEL's Plantations (AMCEL)

AMCEL distributes free compost made from biomass residues such as bark generated during tree planting and forestry activities to local farmers around its plantations. This activity promotes agriculture in the local community and has been praised by the farmers as leading to the organic cultivation of crops. It also leads to the effective utilization of unused biomass residue.

#### Implementation of Vocational Training for Community Residents Around Plantations (AMCEL)

AMCEL owns vast tracts of land, including plantation land, and engages to improve its relationship with local residents. As part of this, it asks what the community wants to learn for employment, and continuously holds seminars on themes that match those questions. Since June 2023, AMCEL has implemented its own social project called "Between Cultures and Agricultures", aimed at farming families, encouraging sustainable management through technical assistance focused on agroecology, contributing to income generation and improving the quality of life of local communities.

#### Supporting Educational Projects for Children from Low-income Families (AMCEL)

AMCEL supports external projects from governmental and non-governmental organizations. These projects encourage the practice of sports and environmental education for children in local communities, with the aim of healthy development of children from low-income families and preventing them from becoming involved in crime or drug use. AMCEL continues to support this initiative by providing support materials for activities and uniforms for students.

### Social Contribution Activity Expenses (Nippon Paper Industries)

|  | FY2021 | FY2022 | FY2023 |
|--|--------|--------|--------|
| Social contribution activity expenses<br>(Donation amount) (Million Yen) | 58     | 49     | 62     |

### 4 Support for Employees' Social Contribution Activities

The Company systematically supports employees' participation in volunteer activities.

- A system to allow employees to take leave for volunteering (Japan Overseas Cooperation Volunteers, etc.)
- System for taking leave for volunteer activities (use of expired annual paid leave <held over leave>)